

Broward County Connects

Live, Learn, Work, and Play

Broward Commuter Rail

Council of Ft Lauderdale Civic Associations

February 11, 2025





Agenda

- PREMO Overview
- Broward Commuter Rail (BCR) Corridor
- BCR South
- BCR North
- PD&E Study Process
- Next Steps

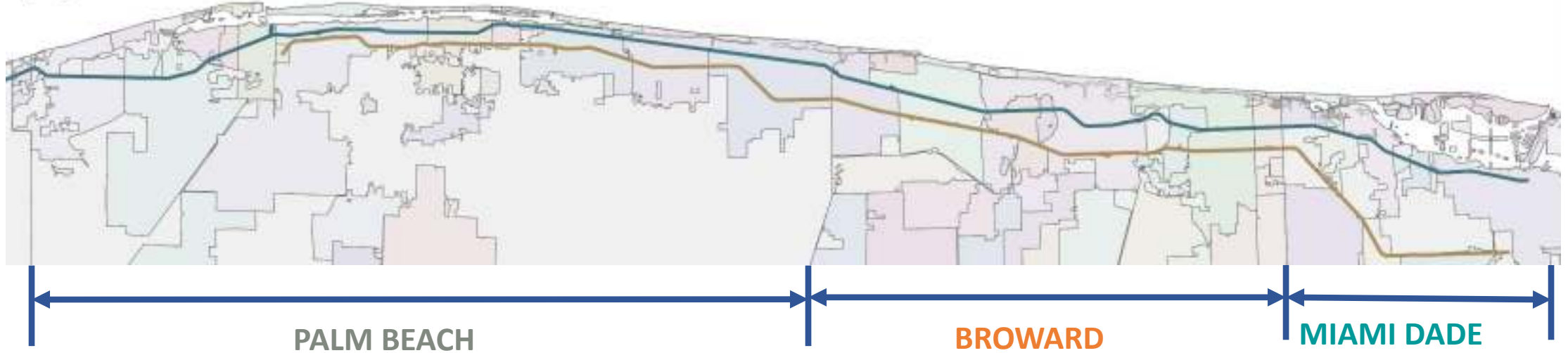


PREMO

Premium Mobility Plan

Broward County Transit

MODE	MILES
Commuter Rail South	11.5
Commuter Rail North	15.5
Light Rail Transit	23.3
Bus Rapid Transit	76
High Frequency Bus	100



The BCR Corridor

- Point of discussion for 20+ years
- 85-mile regional spine along the Florida East Coast Railway (FECR)
- Relieves congestion on I-95 and US 1
- Offers new economic opportunities
- 24% property value increase near premium transit



Purpose and Need

The purpose of the project is to implement commuter service along the existing FEC corridor from Aventura in Miami-Dade County into Broward County, Florida. The project would provide a new and reliable option for north-south commuters by connecting to major activity centers and neighborhoods adjacent to the line and support economic development and land use plans and policies in eastern Broward County.

Primary Needs

- Increase North-South Travel Opportunities
- Accommodate Existing and Future Population Growth
- Encourage Sustainable Land Use and Economic Development

Secondary Needs

- Enhance Intermodal Connectivity
- Improve Transit Service to High Density Travel Market
- Preserve and Enhance the Environment and Safety

Broward Commuter Rail South

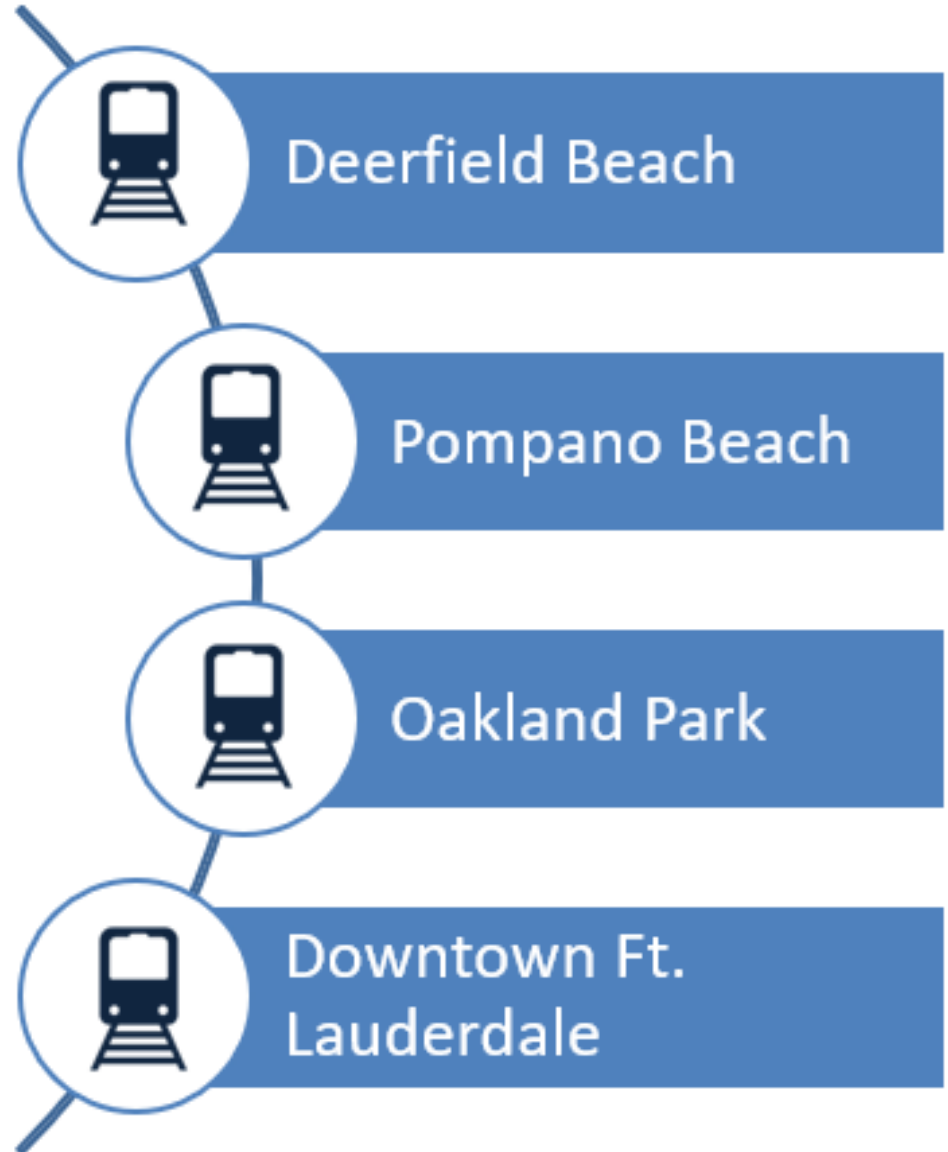
- Locally Preferred Alternative (LPA) adopted in 2022
- Key Milestones Met
 - NEPA completed Sept. 2024
 - 30% Plans and Cost Estimates completed Nov. 2024
 - Accepted into New Starts Program Dec. 2024
- Ongoing grant application preparation
- Completing Project Development Dec. 2025



Fort Lauderdale-Hollywood International Airport
Conceptual Station

Broward Commuter Rail North

- Part of the original vision
- Local communities welcome new service
- Station location: Deerfield Beach, Pompano Beach, Oakland Park and Downtown Ft. Lauderdale
- Public engagement underway
- Next step: LPA and PD&E



Process

Phase 1

Planning

Phase 2

PD&E Study

Phase 3

Design

Phase 4

Right of Way Acquisition
(if required)

Phase 5

Construction

Phase 6

Operations and Maintenance

What is a PD&E?

A Project Development and Environment (PD&E) Study is FDOT's procedure for complying with the National Environmental Policy Act (NEPA) of 1969 and associated federal and state laws and regulations

It involves:

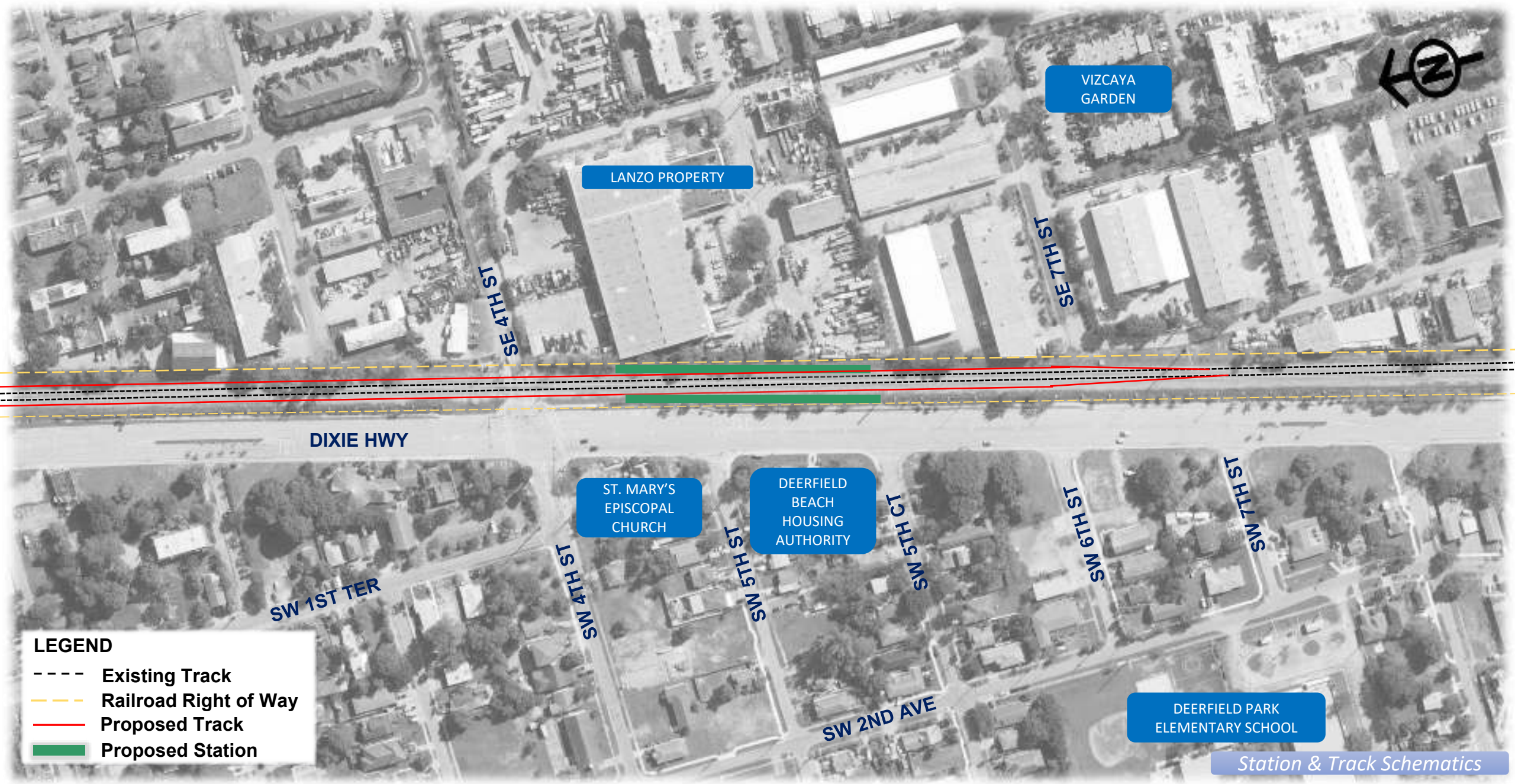
- Conducting preliminary engineering
- Evaluating alternatives that meet the Purpose and Need while enhancing, avoiding, minimizing, or mitigating potential environmental impacts
- Coordinating with stakeholders, federal, state, and local agencies
- Engaging the public in evaluation of the alternatives (a key aspect throughout the life of a project)
- Select a Locally Preferred Alternative (LPA) that will move forward with the Federal Transit Administration NEPA Process

Issues to Resolve During PD&E

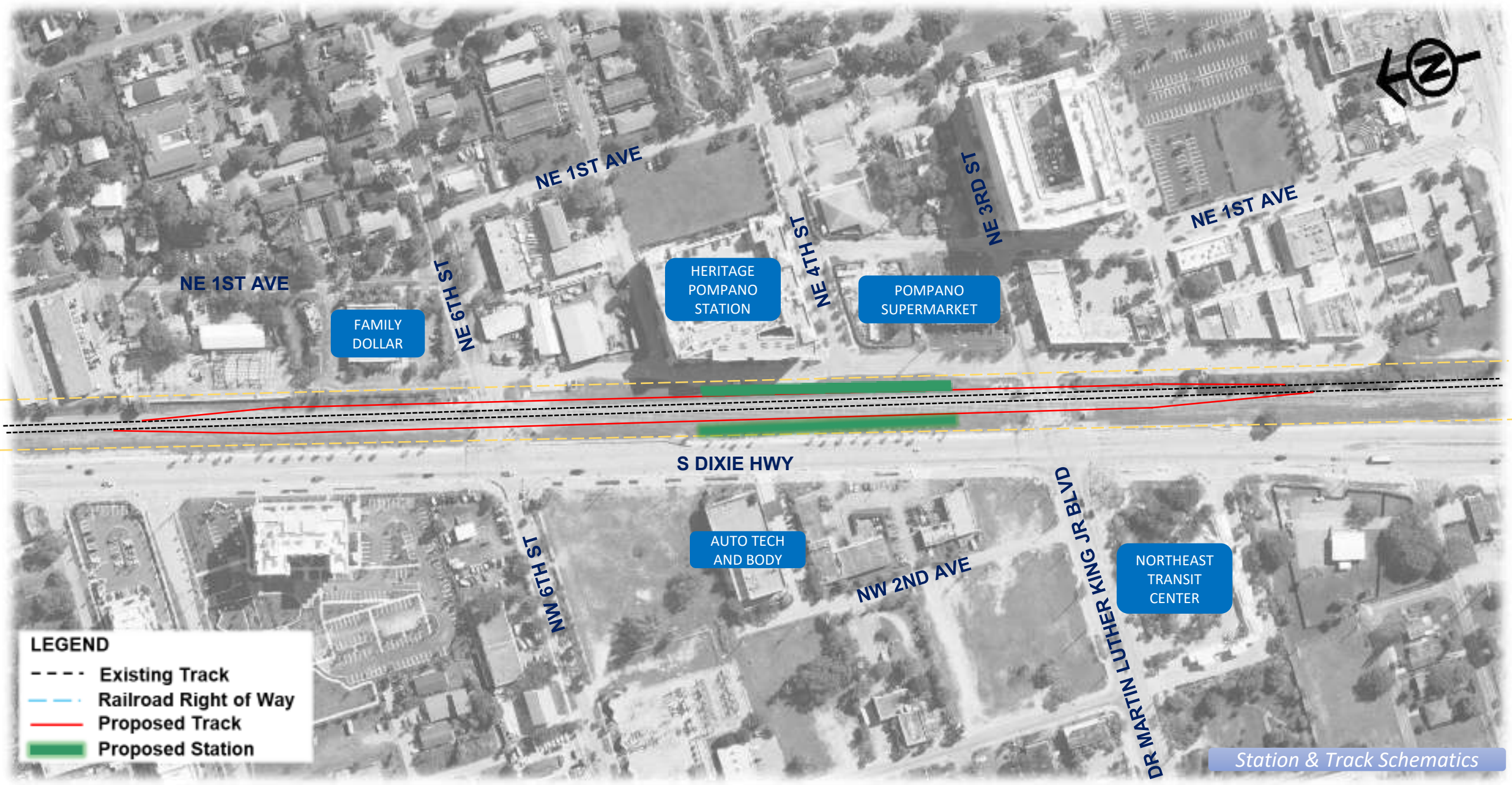
- Traffic circulation and emergency response times due to additional trains
- Pedestrian circulation
- Interaction with affected individual property owners
- Noise and vibration analysis
- Station design and access



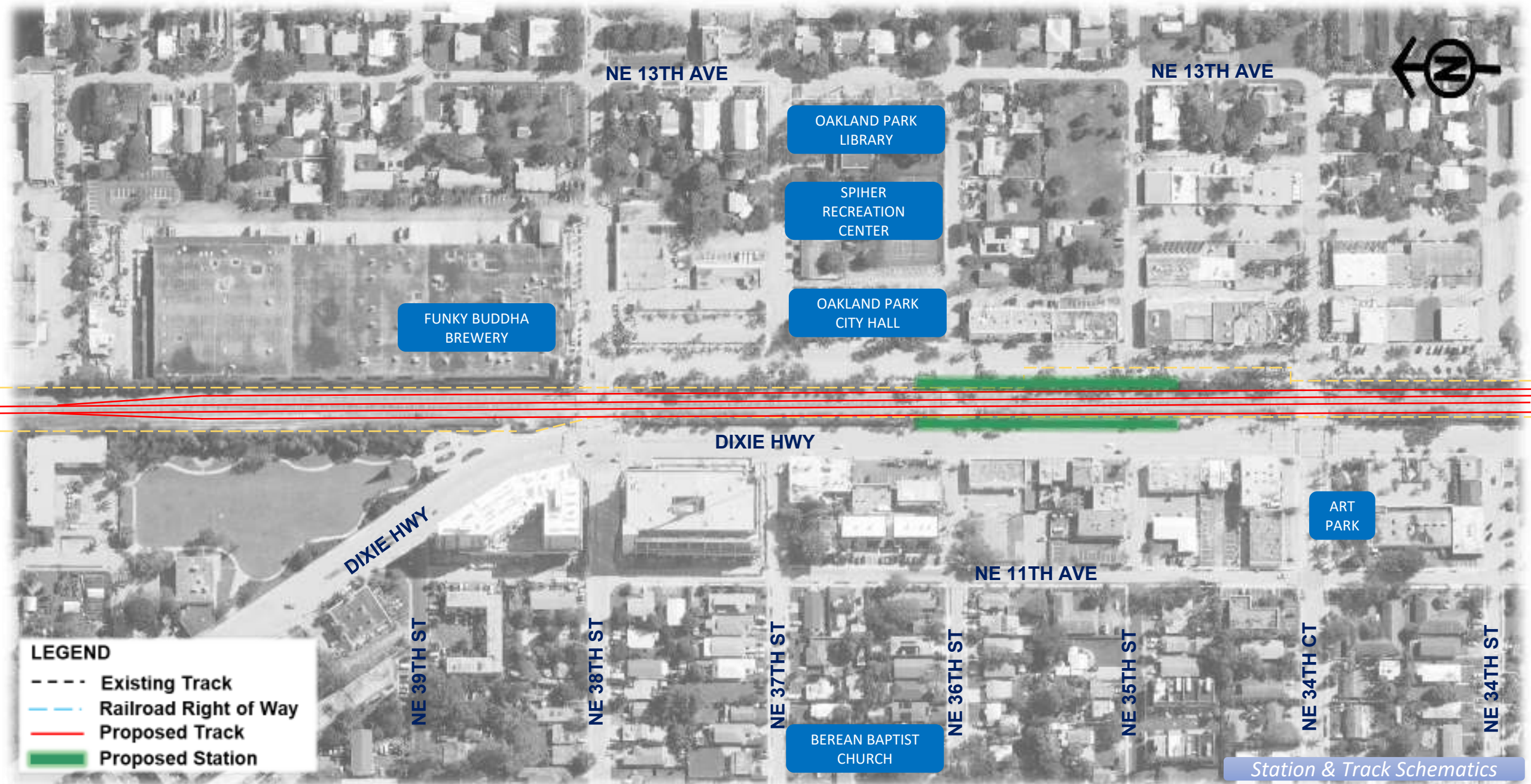
Deerfield Beach Station



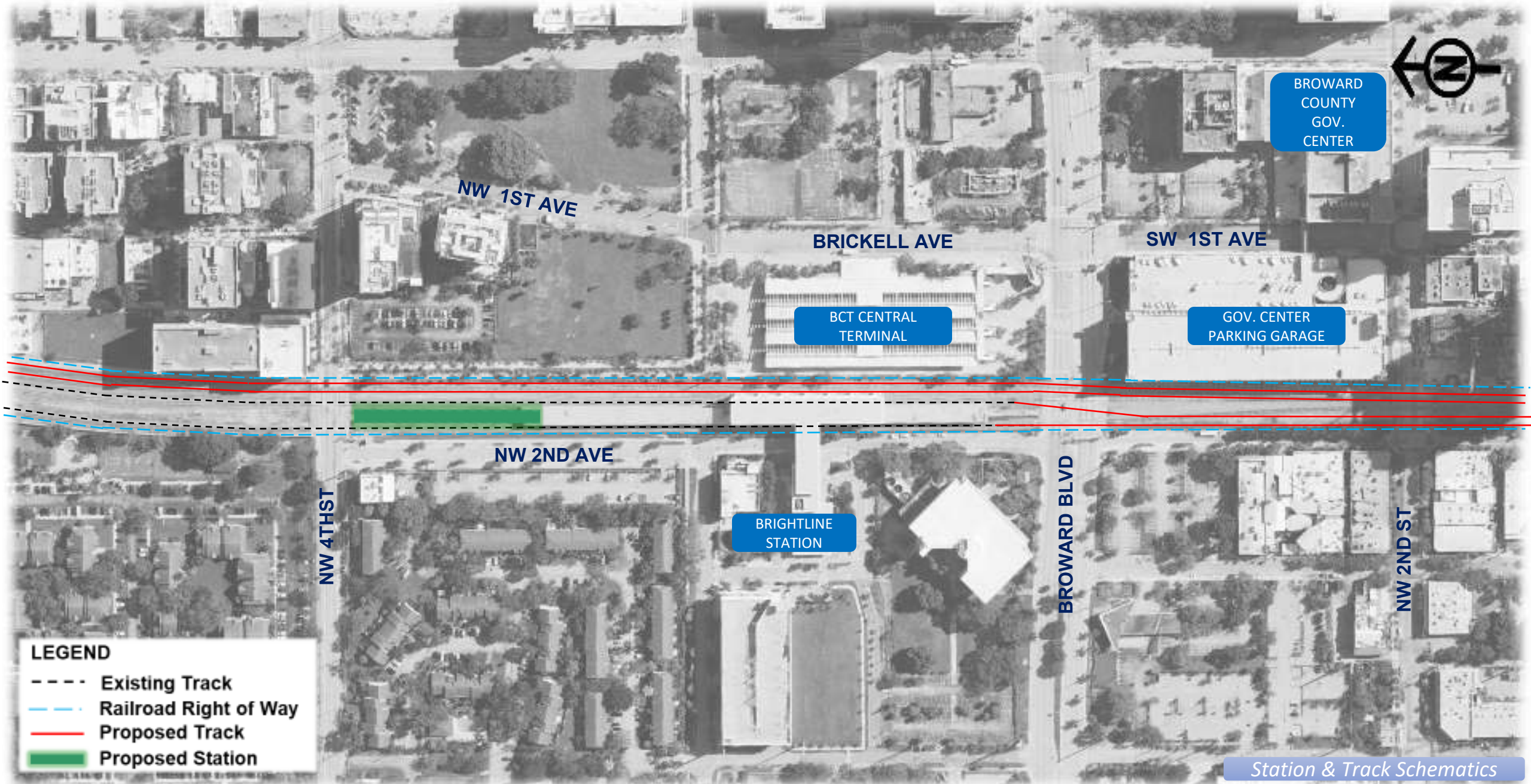
Pompano Beach Station



— Oakland Park Station



Downtown Fort Lauderdale Station





New River Crossing

- The New River is quite narrow at this location
- Existing rail bridge is 4-feet high
- Prevents most boats from passing when down
- Coast Guard requires new crossing for more frequent trains
- Supports marine industry and promotes better mobility
- Multiple crossing options



New River Bridge System

- Multiple studies on New River Crossing
- Up to 118 trains per day possible in the future
- In 2024, TYLin tasked to optimize bridge solution
- Result: an iconic and affordable bridge system
 - The total length roughly 0.5 miles
 - Costs are roughly \$500 million
- Positive reactions on appearance received
- Three options shared with stakeholders



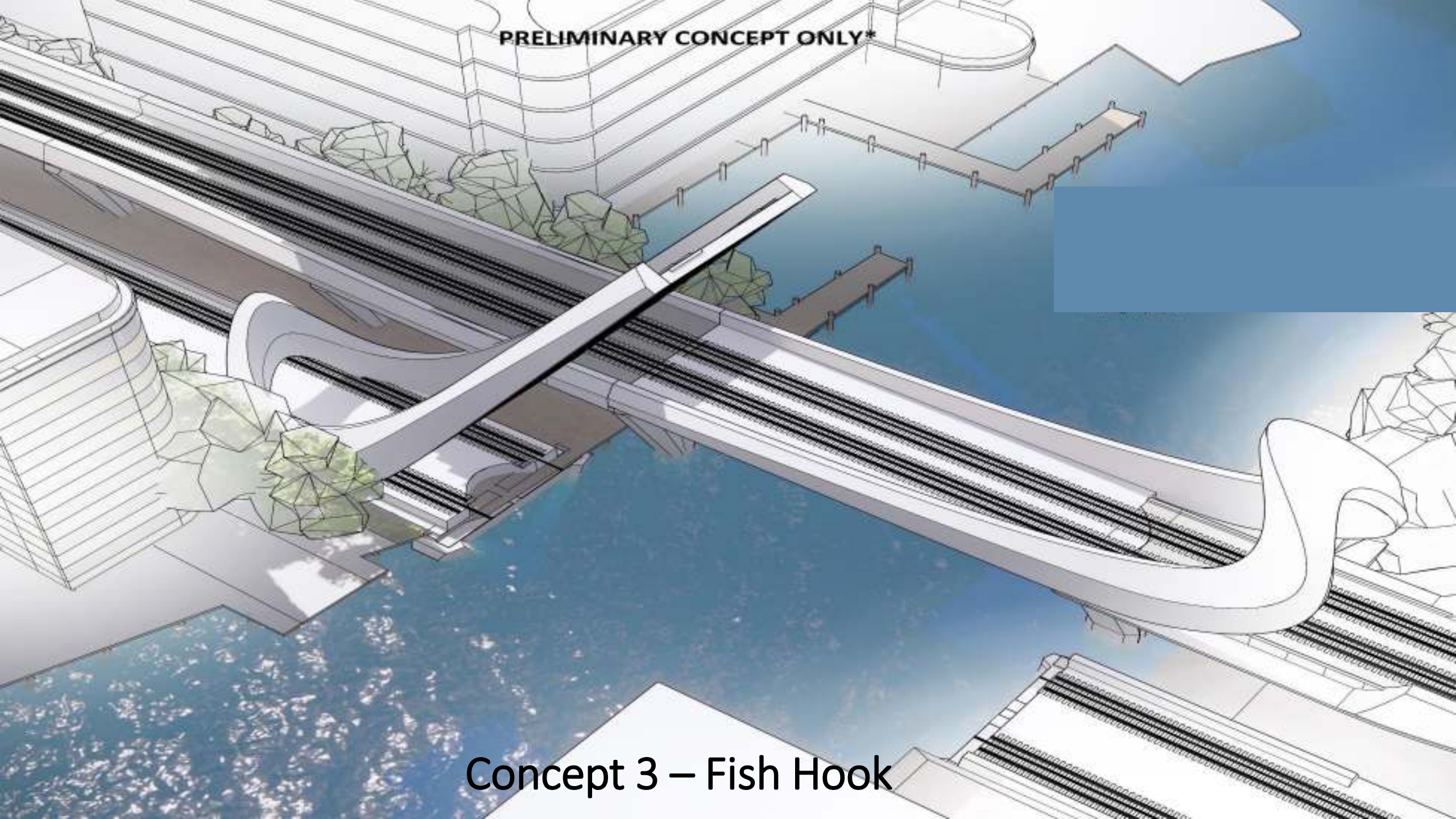
Concept 1 - Mast

PRELIMINARY CONCEPT ONLY*

Concept 2 – Sea Glass



PRELIMINARY CONCEPT ONLY*



Concept 3 – Fish Hook



Bridge System Benefits

- Structurally and Operationally Sound
- A cost-effective option preserves PREMO funds
- Compliments new developments
- Replaces an old freight rail bridge with a modern and attractive bridge system
- Enables 95% of Marine Industry traffic
- Stays within the existing railroad Right of Way



Next Steps

- Continue public engagement for BCR North
 - General Public Meeting
February 19, 2025 at 6:30pm
Emma Lou Olson Civic Center, Pompano Beach
- Adopt a locally preferred alternative for BCR North
- Begin the Project Development and Environmental Study for BCR North

A long-exposure photograph of a city street at night. In the foreground, a tram is moving from right to left, leaving a vibrant trail of light in shades of orange, red, and white. The street is lined with modern buildings, some of which are illuminated with blue and white lights. The sky is dark, and the overall scene is a dynamic representation of urban life.

Thank you

For more information on
Broward Commuter Rail
visit
www.Broward.org/BCT/BCRNorth